

BUSHFIRE MANAGEMENT PLAN

Wallerawang Quarry

BUSHFIRE MANAGEMENT PLAN

Wallerawang Quarry

Prepared by
Umwelt (Australia) Pty Limited
on behalf of
Walker Quarries Pty Ltd

Project Director: Adam Williams
Project Manager: Caroline Gazi
Report No. 4433/R07
Date: July 2023



Lithgow

PO Box 307
Lithgow NSW 2790
ABN 82 003 061 890

T | 02 6352 3377
E | accounts@walkerquarries.com.au

www.walkerquarries.com.au

Orange

75 York St
Teralba
NSW 2284

T | 1300 793 267
E | info@umwelt.com.au

www.umwelt.com.au



This report was prepared using
Umwelt's ISO 9001 certified
Quality Management System.

Disclaimer

This document has been prepared for the sole use of the authorised recipient and this document may not be used, copied or reproduced in whole or part for any purpose other than that for which it was supplied by Umwelt (Australia) Pty Ltd (Umwelt). No other party should rely on this document without the prior written consent of Umwelt.

Umwelt undertakes no duty, nor accepts any responsibility, to any third party who may rely upon or use this document. Umwelt assumes no liability to a third party for any inaccuracies in or omissions to that information. Where this document indicates that information has been provided by third parties, Umwelt has made no independent verification of this information except as expressly stated.

©Umwelt (Australia) Pty Ltd

Document Status

Rev No.	Reviewer		Approved for Issue	
	Name	Date	Name	Date
Draft V2.1	Alex Irwin	24 April 2020	Johann van der Merwe (Walker Quarries)	24 April 2020
Final V2.2 (approved)	Alex Irwin	4 August 2020	Johann van der Merwe (Walker Quarries)	20 August 2020
Draft V3	Alex Irwin	16 November 2021	Wayne Chapman (Walker Quarries)	23 November 2021
Final V3.1 (approved)	Alex Irwin	7 June 2022	Wayne Chapman (Walker Quarries)	7 June 2022
Draft V4.1	Adam Williams	25 July 2023	Adam Williams	25 July 2023
Final V4.2	Adam Williams	10 August 2023	Adam Williams	10 August 2023

Table of Contents

1.0	Introduction	1
1.1	Scope	1
1.2	Consultation	3
1.3	Local Setting	3
1.4	Quarry Operations and Potential Sources of Fire	3
1.5	Distribution	4
2.0	Regulatory Requirements	6
2.1	Development Consent DA 344-11-2001	6
2.2	Fire Officer	8
3.0	Objectives and Outcomes	9
4.0	Operational Controls, Safeguards and Management Measures	10
4.1	Prevention and Management of On-site Fire	10
4.2	Active Bushfire Response and Management	13
4.2.1	Preparation for Bushfire Event	13
4.2.2	Managing Active Bushfire	13
4.3	Managing Bushfire Risks – Agency Cooperation	14
5.0	Monitoring and Notifications	15
6.0	Incident and Complaint Management	16
6.1	Incident Management	16
6.1.1	Incident Identification	16
6.1.2	Fire Event	16
6.1.3	Non-compliance	16
6.2	Complaint Management	17
7.0	Plan Implementation	18
7.1	Roles and Responsibilities	18
7.2	Competence Training and Awareness	18
7.3	Plan Review and Continual Improvement Protocol	19
8.0	References	20

Figures

Figure 1.1	Locality Plan	2
Figure 1.2	Approved Quarry Site Layout	5

Tables

Table 2.1	Bushfire Related Conditional Requirements of DA 344 – 11 – 2001	6
Table 2.2	Bushfire-Related Requirements of WHS (MPS) Regulation	7
Table 3.1	Bushfire Management Objectives and Key Performance Outcomes	9
Table 7.1	Roles and Responsibilities	18

Appendices

Appendix 1	Consultation	1
Appendix 2	Response to Consultation Feedback	1
Appendix 3	FC NSW Fire Management Requirements for Clearing Operations	1

1.0 Introduction

1.1 Scope

This Bushfire Management Plan (BFMP) for Wallerawang Quarry (the Quarry) has been developed to satisfy the requirements of Schedule 3, Condition 40 of DA 344-11-2001. This version of the BFMP was reviewed and updated by Umwelt (Australia) Pty Ltd (Umwelt) on behalf of Walker Quarries Pty Ltd (Walker Quarries) to reflect the commencement of the Work Health and Safety (Mines and Petroleum Sites) Regulation 2022 under the Work Health and Safety (Mines and Petroleum Sites) Act 2013 (WHS Act).

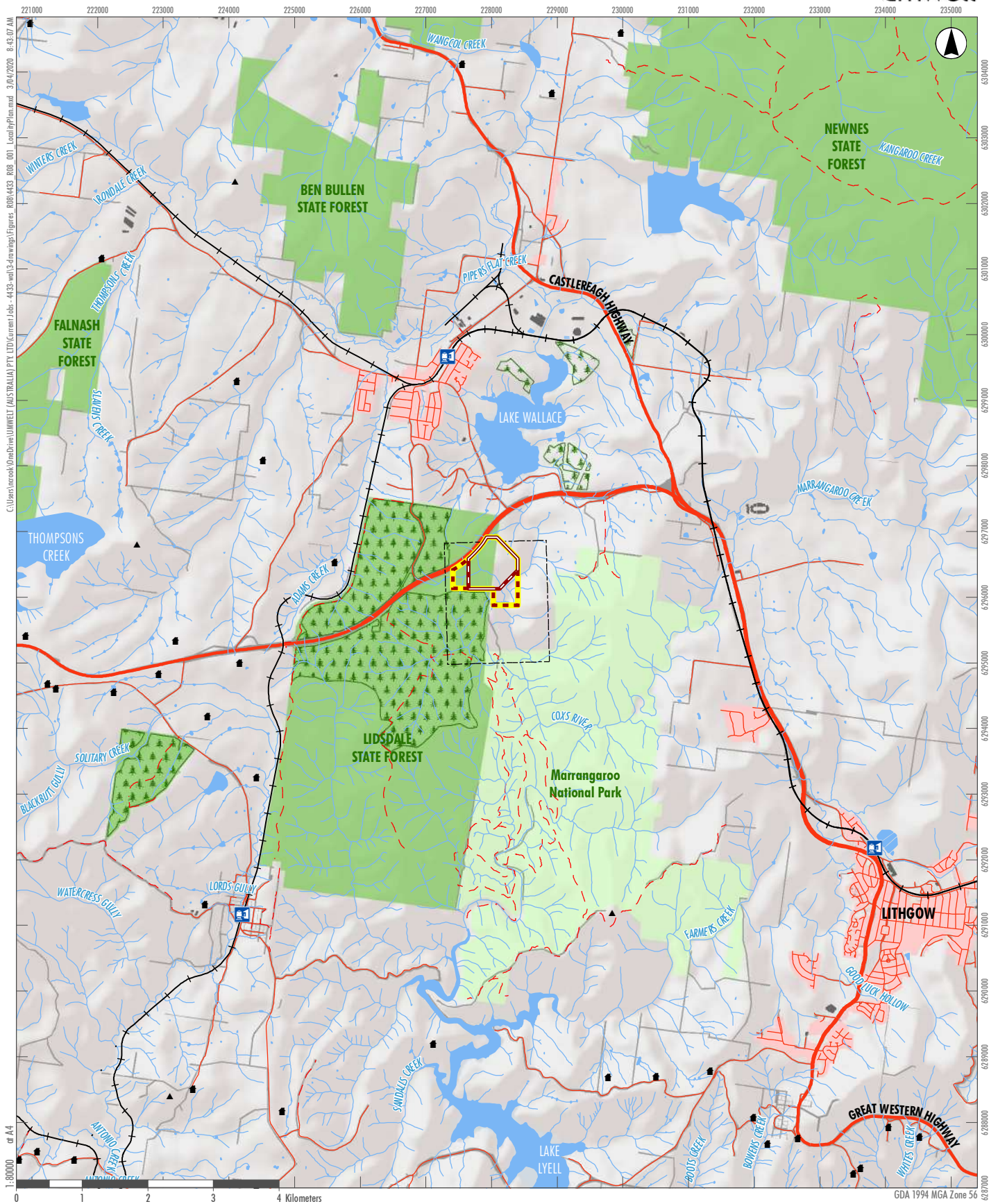
The Quarry is located approximately 8 kilometres (km) northwest of Lithgow (see **Figure 1.1**) and is operated in accordance with DA 344-11-2001. DA 344-11-2001 approves disturbance up to a maximum of 28.6 ha for the purpose of quartzite and other hard rock extraction, processing, stockpiling, management and on-site disposal of non-saleable (overburden) materials, and ancillary infrastructure. The Quarry is approved to produce 500,000 tonnes per annum (tpa) of hard rock aggregate material and sand.

The BFMP is an important tool for Walker Quarries to refer to, for both its staff and contractors, to minimise the risk of fire initiation and/or manage bushfires should they occur within or adjacent to the Quarry. The BFMP applies to the Quarry Site, as approved by DA 344-11-2001, which covers an area of 61.1 hectares (ha) and is located on both Crown Land (of Lidsdale State Forest) and freehold land (Lot 6, DP 872230, owned by Sitegoal Pty Ltd of which Walker Quarries is a subsidiary) (see **Figure 1.1**). The BFMP covers all activities which may impact on or influence a risk to local bushfire occurrence and/or management including:

- fire initiated on the Quarry Site
- fire initiated on company-owned land beyond the Quarry Site
- bushfire on adjoining land which threatens assets and human safety of the Quarry Site and surrounding land holdings.

The BFMP addresses:

- the activities approved under DA 344-11-2001 (as amended 26 February 2020).
- consultation undertaken during preparation of this Plan
- potential sources of fire as a result of Quarry operations
- the legal and other requirements associated with bushfire management
- objectives and key performance outcomes
- bushfire management practices that will be implemented during the ongoing operation of the Quarry
- incident reporting procedures
- roles and responsibilities in implementing the BFMP
- competence training and awareness for personnel and contractors
- plan review and continual improvement.



- Legend**
- Quarry Site Boundary
 - Quarry Site ML Extension
 - Quarry Site (ML1633)
 - EL 4473
 - State Forest
 - NPWS Estate

FIGURE 1.1
Locality Plan

1.2 Consultation

Condition 40, Schedule 3 of DA 344-11-2001 states that the Quarry “must prepare a Bushfire Management Plan for the site, in consultation with FCNSW, to the satisfaction of the Rural Fire Service”.

A request to provide input to the content of the BFMP (Version 2) was made to the Forestry Corporation NSW (FCNSW) and the NSW Rural Fire Service (the RFS) in November 2017. Once drafted, a copy of the BFMP was provided to FCNSW, Lithgow City Council (LCC) and the RFS for review prior to finalisation.

FCNSW was consulted regarding content requirements of the BFMP on 18 March 2020. A response from FCNSW was received on 8 April 2020 confirming FCNSW was satisfied with the content of the BFMP.

Copies of the consultation, along with the responses of these organisations, are included as **Appendix 1**. **Appendix 2** provides a summary as to how matters raised by FCNSW (in 2017 and 2020) have been considered and addressed as part of the preparation of this BFMP.

1.3 Local Setting

According to the RFS Bushfire Prone Land Checker, the Project Site is identified as occurring on bushfire prone land (<https://www.rfs.nsw.gov.au/plan-and-prepare/building-in-a-bush-fire-area/planning-for-bush-fire-protection/bush-fire-prone-land/check-bfpl>).

There is no record of bushfire on the Quarry Site or adjacent land (including the Lidsdale State Forest and adjoining Crown Land in the period since Walker Quarries (Sitegoal Pty Ltd) commenced investigations regarding the development of a quarry on the subject land (circa 1999).

1.4 Quarry Operations and Potential Sources of Fire

Figure 1.2 presents the layout of the Quarry which includes the following features:

- a secured and signed entrance with the Great Western Highway and sealed access road to the main site office, weighbridge and wheel wash
- site amenities, workshop facilities and parking areas
- an open cut mining area and haul road
- crushing, screening and washing facilities, stockpile areas and water management infrastructure
- various internal roads, and erosion and sediment control structures.

An assessment of the bushfire hazard over the Quarry Site was undertaken during the preparation of the EIS (Pacrim, 2001), as well during the preparation of subsequent assessments of modifications to the Quarry (RWC, 2017, Umwelt 2019), confirming a low hazard rating. Notwithstanding, potential sources of fire initiation at the Quarry have been identified as follows:

- ignition of fuel or other flammable material on working equipment
- ignition of fuel or flammable materials during equipment or plant maintenance, e.g. welding, electrical maintenance
- ignition of vegetation leaf litter within uncleared areas, or areas under rehabilitation as a result of heat or spark from mobile equipment or vehicles
- inappropriate disposal of cigarettes

- lightning strike of vegetation or on-site structures.

1.5 Distribution

A copy of the BFMP is held by the Quarry Manager (at the Quarry) and Fire Officer.

A copy of the BFMP has been supplied to:

- RFS – Wallerawang Branch
- FCNSW
- LCC
- DPE.

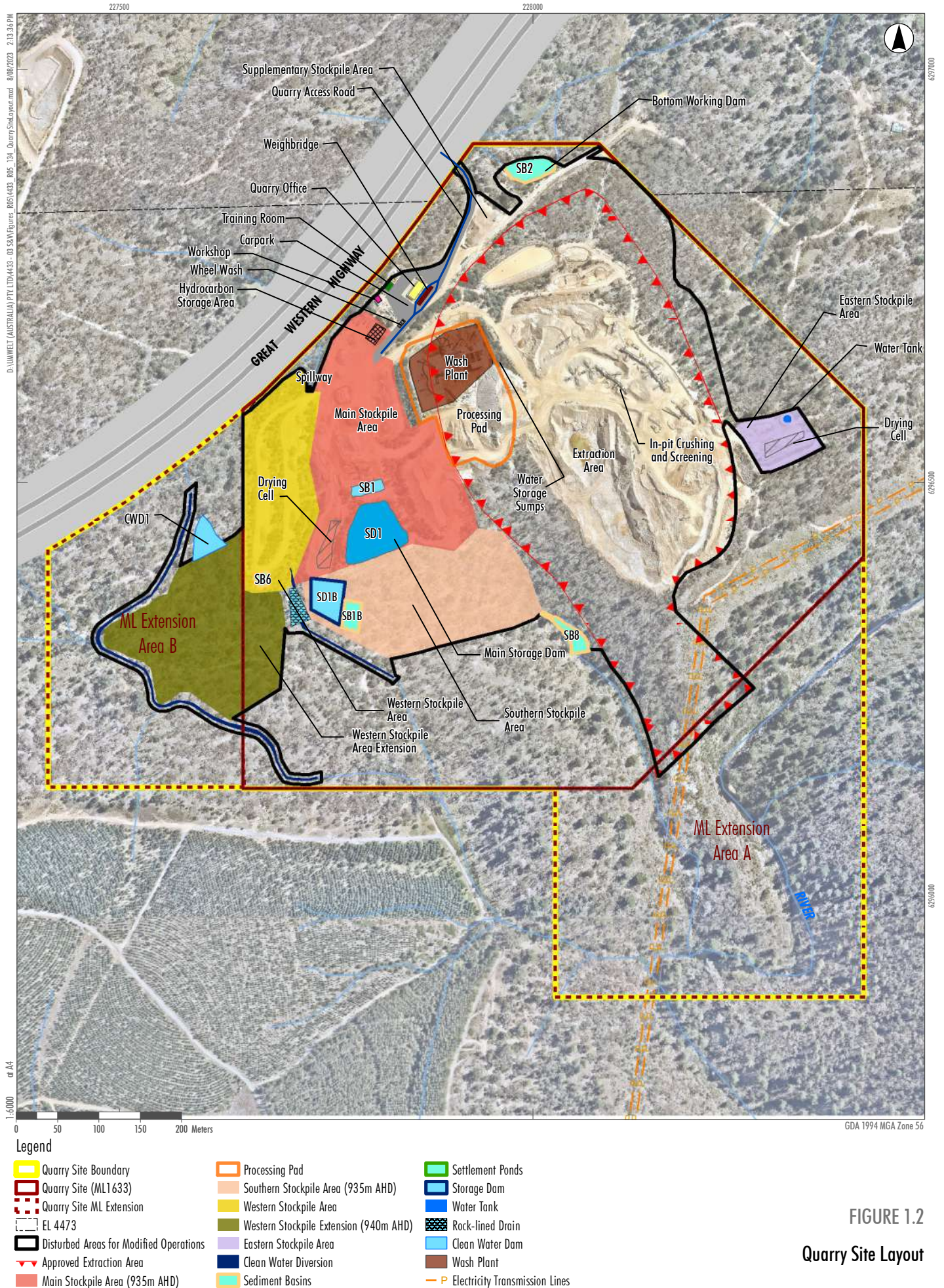


FIGURE 1.2
Quarry Site Layout

2.0 Regulatory Requirements

2.1 Development Consent DA 344-11-2001

Schedule 3, Condition 39 of DA 344-11-2001 provides instruction as to the requirements of Walker Quarries in relation to site preparation and fire response. Schedule 3, Condition 40 requires the preparation of a *Bushfire Management Plan*. **Table 2.1** identifies each of the conditional requirements associated with bushfire management, as well as the preparation of management plans more generally, and identifies the section of this BFMP where each is addressed.

Table 2.1 Bushfire Related Conditional Requirements of DA 344 – 11 – 2001

Condition No	Condition Requirement	Section
Bushfire		
Schedule 3, Condition 39	The Applicant must:	
	a) ensure that the development is suitably equipped to respond to any fires on-site; and b) assist the Rural Fire Service and emergency services to the extent practicable if there is a fire in the vicinity of the site.	4.1, 4.2.1 4.2.2, 4.3
Schedule 3, Condition 40	The Applicant must prepare a BFMP for the site, in consultation with FCNSW, to the satisfaction of the Rural Fire Service.	1.5, App 1
Management Plan Requirements		
Schedule 5, Condition 3	Management plans required under this consent must be prepared in accordance with relevant guidelines, and include:	
	(a) a summary of relevant background and baseline data;	N/A
	(b) details of:	
	• the relevant statutory requirements (including any relevant approval, licence or lease conditions);	2.1
	• any relevant limits or performance measures and criteria; and	N/A
	• the specific performance indicators that are proposed to be used to judge the performance of, or guide the implementation of, the development or any management measures;	4.3
	(c) any relevant commitments or recommendations identified in the document/s listed in condition 2(c) of Schedule 2;	4.0
	(d) a description of the measures to be implemented to comply with the relevant statutory requirements, limits, or performance measures and criteria;	4.0
	(e) a program to monitor and report on the:	
	• impacts and environmental performance of the development; and • effectiveness of the management measures set out pursuant to condition 2(c) of Schedule 2;	5.0
	(f) contingency plan to manage any unpredicted impacts and their consequences and to ensure that ongoing impacts reduce to levels below relevant impact assessment criteria as quickly as possible;	6.0
	(g) a program to investigate and implement ways to improve the environmental performance of the development over time;	7.3

Condition No	Condition Requirement	Section
Schedule 5, Condition 3A	(h) a protocol for managing and reporting any: <ul style="list-style-type: none"> incident, non-compliance or exceedance of the impact assessment criteria or performance criteria; complaint; or failure to comply with statutory requirements; and 	5.0
	(i) public sources of information and data to assist stakeholders in understanding environmental impacts of the development; and	N/A
	(j) a protocol for periodic review of the plan.	7.3
	The Applicant must ensure that management plans prepared for the development are consistent with the conditions of this consent and any EPL issued for the site.	3
	The Applicant must continue to apply existing approved management plans, strategies or monitoring programs that have most recently been approved under this consent, until the approval of a similar plan, strategy or program under this consent.	Noted
Schedule 5, Condition 5	Within 3 months of the submission of an: <ul style="list-style-type: none"> (a) incident report under condition 9 below; (b) Annual Review under condition 11 below; (c) audit report under condition 14 below; and (d) any modifications to this consent, the Applicant must review the strategies, plans and programs required under this consent, to the satisfaction of the Secretary. The applicant must notify the Department in writing of any such review being undertaken. Where this review leads to revisions in any such document, then within 6 weeks of the review the revised document must be submitted for the approval of the Secretary.	7.3

Note 1: The RFS have indicated it does not endorse bushfire management plans and therefore does have any comments to make.

The NSW *Work Health and Safety (Mines and Petroleum Sites) Regulation 2022* (WHS (MPS) Regulation) also includes requirements for controls and safeguards relating to fire. **Table 2.2** identifies the relevant requirements of the WHS (MPS) Regulation and identifies the section of this BFMP where each is addressed.

Table 2.2 Bushfire-Related Requirements of WHS (MPS) Regulation

No.	Condition Requirement	Section
Schedule 1, Section 9 - Fire or Explosion		
Section 9 (1)	The following matters must be considered in developing the control measures to manage the risks of fire or explosion:	Noted
	(a) the potential sources of flammable, combustible and explosive substances and materials, both natural and introduced, including gas, dust, ores, fuels, solvents and timber	1.4
	(b) the potential sources of ignition, fire or explosion, including plant, electricity, static electricity, spontaneous combustion, lightning, light metal alloys, hot work and other work practices	4.1
	(c) the potential for propagation of fire or explosion to other parts of the mine or petroleum site	4.1
	(d) the potential sources of flammable material with a flash point of less than 61°C, including materials on the top of any shaft, outlet or well at the mine or petroleum site	N/A

No.	Condition Requirement	Section
	(e) arrangements for the management and control of the transport and storage of combustible liquids	External Contractor (Lowe's Petroleum)
	(f) arrangements for the prevention of fires, including the types and location of systems for the early detection and suppression of fires	4.1
	(g) the equipment for fighting fire at the mine or petroleum site	4.1
	(h) in the case of an underground mine—the arrangements for the management and control of volatile or hazardous materials.	N/A
Section 9 (2)	A principal hazard management plan that addresses fire or explosion is to include details of any procedures to be used for carrying out hot work at the mine or petroleum site.	4.1 Welding/ Hot Work Operations

2.2 Fire Officer

A Fire Officer will be appointed by the Quarry Manager or the Quarry Manager may appoint himself/herself to the Fire Officer's role. The Fire Officer's responsibilities will include:

- compliance with the BFMP
- ensuring maintenance and inspection of fire fighting equipment is carried out
- reporting and replacing of damaged fire equipment.

The Fire Officer will report directly to the Quarry Manager and, where action is required, will be required to complete periodic reports of his/her inspections.

The Quarry Daily Inspection Checklist (signed off by either the Quarry Manager or a Competent Person) complies with the WHS (MPS) Regulation and includes inspections of the Hydrocarbon Storage Area. Plant equipment (including fire extinguishers) are inspected and signed off by equipment operators prior to commencement of equipment operation each day.

3.0 Objectives and Outcomes

Table 3.1 presents the objectives and key performance outcomes relating to bushfire management at the Quarry.

Table 3.1 Bushfire Management Objectives and Key Performance Outcomes

Objectives	Key Performance Outcomes
To ensure compliance with all relevant Quarry approval conditions, statements of commitment and reasonable community expectations.	Compliance with all relevant criteria and reasonable community expectations, as determined in consultation with the relevant government agencies.
To identify, manage and control all fire hazards of the Quarry.	No avoidable ignition of fire as a result of Quarry operations.
To implement appropriate bushfire management and mitigation measures during all stages of the Quarry.	All identified management and mitigation measures implemented.
To contain any outbreak of fire as a result of Quarry operations.	No spread of fire initiated on the Quarry Site beyond the Quarry Site.
To provide assistance as required to the RFS in the event of a local bushfire event.	All identified management and mitigation measures implemented.
To implement appropriate corrective and preventative actions, if required.	Corrective and preventative actions implemented, if required.
To implement an appropriate incident reporting program, if required.	Incidents (if any) reported in an appropriate manner.

4.0 Operational Controls, Safeguards and Management Measures

4.1 Prevention and Management of On-site Fire

Walker Quarries is conscious of the need to ensure adequate bushfire controls are maintained so that its activities do not increase the potential for fires on or surrounding the Quarry.

Operational controls and safeguards to be implemented to minimise the risk of fire on or surrounding the Quarry are as follows.

Earthmoving Machinery

- All earthmoving machinery will be maintained in good working order with efficient exhaust systems and spark arrestors. Regular inspections will be carried out.
- All earthmoving machinery and mobile equipment will be fitted with appropriately sized and approved fire extinguishers suitable for the control of flammable liquid and electrical fires. Some of the heavy machinery will be fitted with independent fire suppression systems in addition to two 80:BE rated fire extinguishers, while all light vehicles will be fitted with one fire extinguisher.

Workshops and Offices

- All workshops and offices will be installed with an approved 80:BE rated fire extinguisher. Their location will be indicated by an appropriate sign.

Fuel and Oil Management

- All fuel and oil storage will be located and constructed in accordance with the requirements of the *Occupational Health and Safety Amendment (Dangerous Goods) Act 2003*.
- Fuel and oil storage areas will be signposted as to the contents of the storages and will be fitted with approved 80:BE rated fire extinguishers.
- All fuel tanks on-site will be fully or self-bunded to ensure that in the event of a leak or rupture, no fuel escapes from the bunded area. Each bunded area will have the capacity of at least 110% of the largest tank. Bunds may be integrated, i.e. form part of the tank structure, or be external.

No Smoking Areas

Designated “No Smoking” areas will be clearly marked on-site. These will include:

- fuel and oil storage areas
- within areas flagged or barricaded areas in preparation for blasting
- when transporting explosives or within 20 m of a vehicle transporting explosives
- within workshops
- all buildings and offices
- any gas cylinder storage areas.

No smoking will be permitted in any forested areas during the Bushfire Danger Period of October to March.

Fire Equipment

- Provision of fire equipment on-site will be in accordance with the requirements of legislation.
- All fire extinguishers will comply with AS/NZS 1841.11:1997 and will be compatible with those of the Rural Fire Service.
- All fire equipment will be kept in a serviceable condition and be inspected at Pre-start and inspected every six months.
- The water truck (see below) will be maintained on-site to provide immediate response to a bushfire.

Water Truck

- A water truck will be:
 - available for use when the Quarry is in operation
 - tested at least monthly for mobility and operation of the water pump
 - properly maintained, with operators trained in the use of all equipment
 - able to be supplied with water from operating mobile water trucks should the need arise, and
 - equipped with:
 - 2 x 80:BE fire extinguishers
 - Hose and fittings to fill RFS Truck.
 - Left full of water at the end of each shift
- Most fire equipment will be compatible with that of the RFS.

Fixed Plant

Approved 80:BE rated extinguishers shall be installed and maintained at the following locations:

- fuel and Lube Bay: 2 x Extinguishers
- offices: 2 x Extinguishers
- workshops: 2 x Extinguishers.

Equipment Storage

- Equipment will not be stored on uncleared ground.

Water Supply

- Water will be retained within the Main Storage Dam (SD1) at all times.

Clearing Operations

- Clearing will be scheduled preferentially for April to September, to avoid the Bushfire Danger Period of October to March.
- If clearing is required during the October to March, the following protocols will be implemented:
 - Immediately prior to and during clearing campaigns during the fire season, Walker Quarries will refer to the FCNSW daily Colour Code and observe all requirements and restrictions as per FCNSW's regulations in **Appendix 3**.

- Only diesel fuelled equipment may enter or be operated within the clearing zone.
- Potential spark sources, e.g. outcropping rock, will be identified, marked and care taken when operating mobile equipment which could create a spark through collision.
- A spotter, with fire suppression equipment available, will be employed to monitor the works and extinguish any fire initiated.
- The cleared zone (and any pushed up vegetation) will be monitored for at least half an hour following completion to ensure no ignition from smouldering vegetation.
- Unnecessary stockpiling of cleared vegetation will be avoided. This will be mulched or chipped when safe to do so and used in rehabilitation of the Quarry. If stockpiling of cleared vegetation is necessary due to the ongoing operations of the quarry (e.g. no areas available for rehabilitation), to a condition of DA 344-11-2001, or as a result of steep terrain restricting access to chipping equipment, it will be stockpiled away from potential ignition sources.
- No vegetation will be burned on the Quarry Site.
- All vehicle movements will be confined to defined roads or tracks.
- Where appropriate, controlled high intensity short term grazing will be employed on privately owned lands to assist in the reduction of vegetative fuel loads.

Blasting Operations

- All blasting operations will be carried out and confined to the open cut.
- All flammable material will be removed by pre-stripping the topsoil prior to any drilling and blasting operations taking place.
- All blasting will be carried out in accordance with the Guideline as set out by Wallerawang Quarry Blast Management and Explosives Control Plan.

Welding/Hot Work Operations

- All welding activities will, as far as practicable, be conducted and confined to the workshop. If welding or cutting is to be carried out outside the workshop area, equipment and restrictions as per **Appendix 3** will be observed, as well as the following:
 - The area within a 20 m radius will be cleared of all flammable material.
 - All oils and greases will be cleared from the work area.
 - Fire extinguishers of an 80:BE rating will be positioned within 10 m of the work area.
 - A water truck will be put on stand-by during the welding or cutting operations.
 - During welding, a second person will be present to observe the welding area.

Rehabilitated Area

- Fire prevention and fuel load reduction in rehabilitated areas will be undertaken, in consultation with the RFS, in accordance with the Quarry Biodiversity Management Plan. This could include:
 - installation of fire breaks
 - controlled burns (in consultation with the RFS and FCNSW)
 - Fuel load/fire security in rehabilitated areas will be inspected bi-annually (refer to **Section 5.0**) and where identified as high will be referred to the RFS for advice on management.

4.2 Active Bushfire Response and Management

4.2.1 Preparation for Bushfire Event

The following measures will be implemented to enable appropriate management of active bushfires in the local area with the potential to impact on the Quarry:

- Incorporate the BFMP into the overarching Emergency Response Plan for the Quarry.
- Provide for equipment noted in **Section 4.1** for management of ember attack on Quarry buildings and other structures.
- All mobile equipment will be equipped with appropriate communication equipment, including two-way radios and/or mobile telephones.
- Establish compatible connection points from the Quarry's water infrastructure to permit the accessibility of this water to firefighting equipment.
- Maintain all internal access roads and tracks to ensure safe access and egress from the Quarry Site in the event evacuation is called.
- All tracks will be regularly checked and kept clear of all obstructions and debris to permit the safe ingress and egress of personnel from the Quarry Site.
- Training will be provided by the Quarry Fire Officer to site personnel in relation to the use of the fire equipment nominated in **Section 4.1** and specific firefighting tasks and procedures.

With the exception of training provision, which is the responsibility of the Quarry Manager, the Fire Officer is responsible for the establishment, implementation and/or maintenance of the above measures.

4.2.2 Managing Active Bushfire

Following identification of an imminent bushfire threat, the following management measures will be implemented:

- Human life is the most important asset to be protected. If it is safe to do so, then property is the second asset to consider preserving.
- The fire will be reported to Emergency Services using the **000** telephone number. Once emergency services have been notified, contact the FCNSW 24 hr fire duty officer on 02 6332 4812.
- If a fire has started in close proximity to a work area and the facilities are on hand to put it out and it is safe to do so, then it should be contained and extinguished as quickly as possible, possibly in conjunction with the RFS.
- If the fire is not in close proximity and it is determined to be safe to do so, work will continue with the following provisions:
 - Fire fighting equipment, including the water truck and extinguishers will be brought close to hand.
 - UHF radio, local AM radio and RFS Fires Near Me App/Website monitored for fire updates.
 - Check regularly to determine if the fire front is moving closer.

- In the event of a local bushfire which threatens the Quarry boundary, all personnel on the Quarry Site would be directed to assemble at the designated Emergency Assembly Area. A head count would be undertaken to confirm all site personnel and visitors are accounted for. At this time, instructions as to specific procedures to be followed, i.e. site protection or evacuation, would be provided in accordance with the Emergency Management Plan and any advice provided by the RFS.

The person responsible for application of the above measures is the Quarry Manager, who will take advice from the Fire Officer and off-site resources, e.g. the RFS, FCNSW and LCC as necessary in making decisions.

4.3 Managing Bushfire Risks – Agency Cooperation

As bushfires typically impact more than one property, Walker Quarries is committed to ensuring that the RFS and other Emergency Services, as well as other agencies responsible for emergency response such as Mines Rescue, are welcomed to inspect the Quarry operation at any time.

Walker Quarries representatives will, at the request of relevant officers of FCNSW, the RFS or LCC, provide for an inspection of the Quarry Site to identify potential fire hazards, identify areas where fuel load reduction may be required and discuss any other relevant matters.

Walker Quarries will assist emergency services to the extent practicable if there is a fire in the vicinity of the Quarry Site.

5.0 Monitoring and Notifications

Inspections and Monitoring

An inspection of the Quarry Site and land boundaries owned and controlled by Walker Quarries will be carried out by the Fire Officer at least every six months. The following will be noted during these inspections:

- maintenance of safe access and egress routes from the Quarry Site in the event an evacuation is called
- maintenance of access to water storage dams and operation of water pumping equipment
- adequacy of access tracks to ensure that they remain free of vegetation and are accessible
- assessment of vegetation fuel loads to ensure that they remain at safe levels.

In addition, the following monitoring will also be undertaken.

- quarterly inspections of fire fighting equipment.

The results of this monitoring, along with an assessment of the effectiveness of management measures, will be reported in the Quarry Annual Review.

Notifications

During the bushfire season, Walker Quarries receives daily updates from the FCNSW Bushfire Alert System. These updates are received by both the Quarry Manager and Weighbridge Officer as text messages.

6.0 Incident and Complaint Management

6.1 Incident Management

6.1.1 Incident Identification

An incident may take the form of either:

- a fire related event on or adjoining the Quarry Site, or
- non-compliance with the conditional requirements of DA 344-11-2001 related to bushfire management.

6.1.2 Fire Event

In the event of a fire on the Quarry Site or reported near miss, or the spread of bushfire onto or adjacent to the Quarry Site, Walker Quarries will initiate an investigation. The investigation will seek to determine:

- what occurred at the time of the incident
- the root cause of the incident (if initiated on the Quarry Site)
- any contributing factors which led to, or exacerbated the incident
- whether appropriate controls were implemented to prevent the incident.

Corrective and/or preventative actions will be assigned to relevant responsibilities following the investigation. Actions will be communicated through planning meetings and toolbox talks. If required, this BFMP will be amended and all personnel with responsibilities under the updated plan will review the amended code. Outstanding actions will be monitored for their effectiveness upon completion.

All reports associated with the incident(s) will be retained on site for five years.

A brief summary of any bushfire prevention works, bushfires occurring or any other reportable bushfire-related activities will be collated into the Annual Review for the Quarry which would also be made publicly available on Walker Quarries website, once accepted.

6.1.3 Non-compliance

Schedule 5, Condition 39 of DA 344-11-2001 requires that the Applicant must:

- (a) ensure that the development is suitably equipped to respond to any fires on site; and
- (b) assist the RFS and emergency services to the extent practicable if there is a fire in the vicinity of the site.

If the nominated firefighting equipment nominated in **Section 4.1** (as identified under sub-headings **Fire Equipment, Water Truck, Fixed Plant** and **Water Supply**) is not confirmed as present and functional during the quarterly inspection (refer to **Section 5.0**), a non-compliance incident will be triggered.

Within seven days of becoming aware of a non-compliance, Walker Quarries will provide written notification to the DPE by email to compliance@planning.nsw.gov.au.

Written notification of a non-compliance will:

- identify the development and application number
- outline the condition of the development consent that the Quarry is non-compliant with
- Outline reasons for the non-compliance (if known)
- outline actions that have been, or will be, undertaken to address the non-compliance.

6.2 Complaint Management

A complaints handling procedure is provided in *Section 6.2.1* of the *Environmental Management Strategy*. Following receipt of a complaint, appropriate action will be taken within two working days to determine the cause of the complaint and identify appropriate actions to remediate the complaint source. The following details will be recorded following receipt of any complaint relating to fire hazard, bushfire or related matters:

- the date and time of the complaint
- the method by which the complaint was made
- any personal details of the complainant which were provided by the complainant or, if no such details were provided, a note to that effect
- the nature of the complaint.

Within 48 hours of receipt of a complaint, action to identify the cause of the complaint and identify appropriate actions to remedy this will be commenced. On completion of actions to address the complaint, the following information will be added to the complaint register:

- the action taken in relation to the complaint, including any follow-up contact with the complainant
- if no action was taken, the reasons why no action was taken.

All complaints will be investigated and an appropriate response provided to the complainant.

Should the complaint relate to fuel loads or other matters associated with Crown Land external to the Quarry Site, the complainant will be referred to the relevant government authority.

7.0 Plan Implementation

7.1 Roles and Responsibilities

Table 7.1 presents the roles and responsibilities of the personnel at the Quarry for the implementation of BFMP.

Table 7.1 Roles and Responsibilities

Roles	Responsibilities
Managing Director	<ul style="list-style-type: none"> Ensuring that sufficient resources are allocated to allow for the complete implementation of the BFMP.
Quarry Manager	<ul style="list-style-type: none"> Overall responsibility for the implementation of the BFMP. Ensuring a Fire Officer is established at the Quarry. Ensuring the Fire Officer has sufficient resources to undertake his/her responsibilities. Ensuring Quarry personnel are aware of fire management obligations and responsibilities. Training of personnel in bushfire management (as required). Communication with FCNSW, the RFS and LCC personnel (as required). Implement inspections and training of Quarry personnel as required.
Fire Officer	<ul style="list-style-type: none"> Ensuring the implementation of the operational controls, safeguards and management measures described in the BFMP. Completing daily inspections of fire safety equipment, operational controls / safeguards relevant to potential initiation of fire. Completing 6-monthly inspections and audits of fire extinguishers, potential fire hazards, and the operational controls, safeguards and management measures nominated in the BFMP. Ensuring maintenance and inspection of firefighting equipment is carried out. Reporting and replacing of damaged fire equipment.
All personnel	<ul style="list-style-type: none"> Comply with all relevant Bushfire Control Measures.

7.2 Competence Training and Awareness

All personnel undergo bushfire management awareness training as a component of the site induction program. The following areas are covered in the induction for all employees, contractors and visitors:

- safety first
- obligations toward prevention and notification
- emergency response procedures
- locations of firefighting equipment.

To reinforce this training and instruction, regular reminders of responsibilities and obligations regarding bushfire prevention will be provided at toolbox talks.

All Quarry personnel, visitors and sub-contractors will be advised of the nominated muster area in the case of an emergency.

7.3 Plan Review and Continual Improvement Protocol

In accordance with Schedule 5, Condition 5 of DA 344-11-2001, the BFMP will be reviewed within three months of:

- an incident as defined by **Section 6.0**
- submission of an Annual Review
- an Independent Environmental Audit completed in accordance with Schedule 5, Condition 13 of DA 344-11-2001
- any modifications to the development consent.

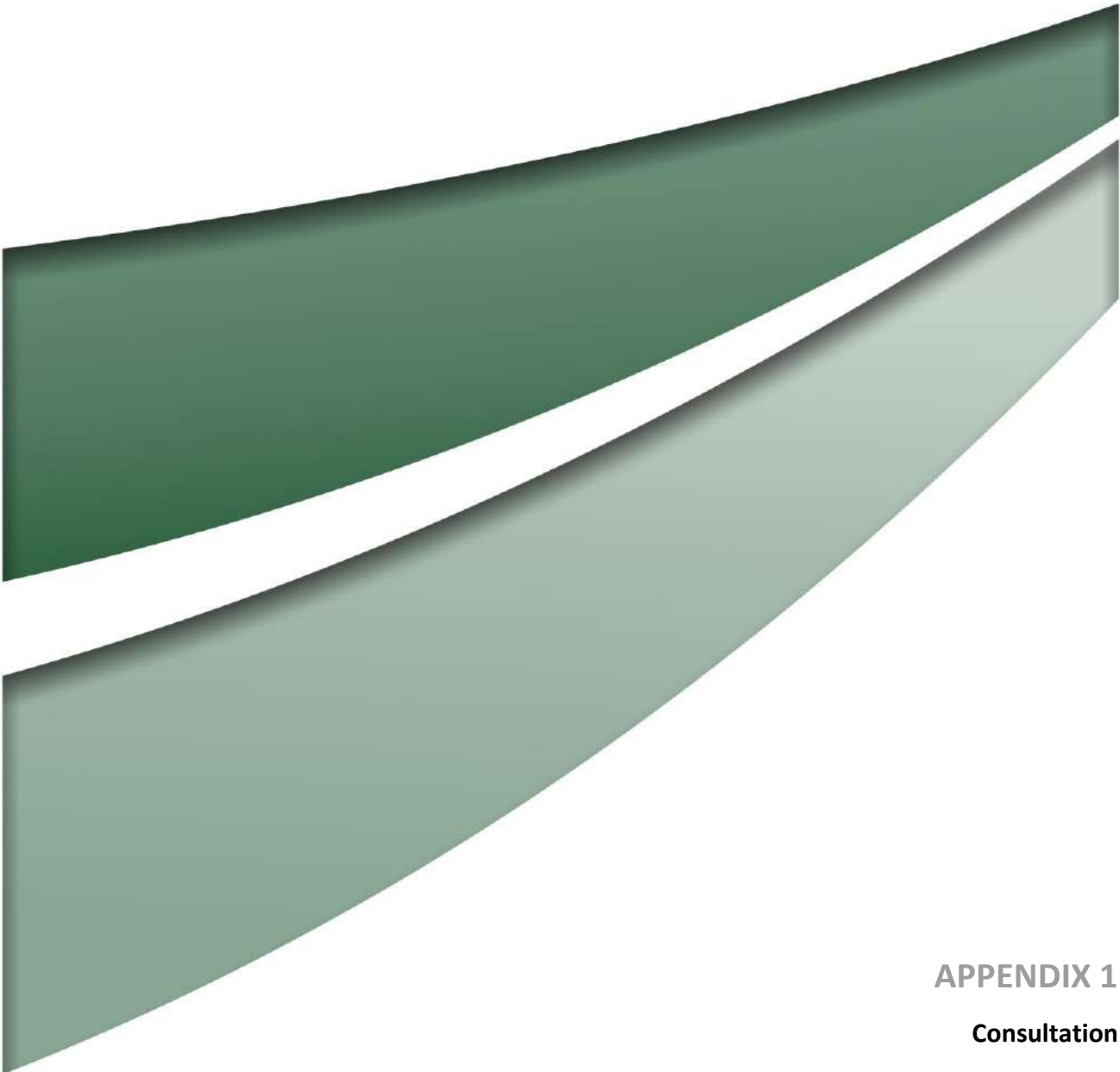
Walker Quarries will notify DPE in writing of any review being undertaken and if this review results in any revisions to the BFMP, submit a copy to the Secretary of DPE for approval (within six weeks of the review). The reviews will ensure the adequacy of the BFMP and allow for opportunities of adaptive management and continual improvement.

8.0 References

Pacrim Environmental (Pacrim) (2001). Environmental Impact Statement Proposed Wallerawang Quarry. Prepared for Sitegoal Pty. Limited, November 2001 (report 01/206.1).

RW Corkery & Co. Pty Limited (RWC) (2017). Environmental Assessment for Modification to Operations at the Wallerawang Quarry (DA 344-11-2001). Prepared on behalf of Walker Quarries Pty Ltd (Report No. 949/05).

Umwelt (Australia) Pty Limited (Umwelt) (2019). Statement of Environmental Effects Wallerawang Quarry Modification 3 (DA 344-11-2001)



APPENDIX 1

Consultation

Consultation

Forestry Corporation / NSW Rural Fire Service

Forestry Corporation NSW

From: Alex Irwin
Sent: Friday, 3 November, 2017 11:54 AM
To: 'dan.kirby@fcnsw.com.au'
Subject: 949 - Wallerawang Quarry - Requirement to Consult with FC NSW
Attachments: Notice of Modification_25 August 2017.pdf

Good afternoon Dan,

Walker Quarries Pty Ltd received approval for a modification to the project approval for the Wallerawang Quarry (DA 344-11-2001) on 25 August 2017 (attached).

Previously I noted Condition 3(31) of DA 344-11-2001 requires Walker Quarries to consult with FC NSW in the preparation of a Rehabilitation Management Plan. I have also identified that Condition 3(40) requires Walker Quarries to consult with FC NSW in the preparation of a Bushfire Management Plan.

With respect to the nominated condition, can you provide any specific requirements of FC NSW for the preparation and/or update of this plan.

I note DA 344-11-2001 requires these plans to be submitted to the Secretary for approval by 25 November 2017 and so we would appreciate any advice as soon as possible.

Regards,

Alex Irwin
Senior Environmental Consultant
(Mobile 0429 635 975)

RW Corkery & Co Pty Limited

Geological and Environmental Consultants



Brooklyn
Level 1, 12 Dangar Road
PO Box 239
BROOKLYN NSW 2083

Orange
62 Hill Street
ORANGE NSW 2800

Brisbane
Suite 5, Building 3,
Pine Rivers Office Park
205 Leitchs Road
BRENDAL QLD 4500

Phone: (02) 9985 8511
Fax: (02) 6361 3622
Email: brooklyn@rwcorkery.com
Website: www.rwcorkery.com

Phone: (02) 6362 5411
Fax: (02) 6361 3622
Email: orange@rwcorkery.com

Phone: (07) 3205 5400
Fax: (02) 6361 3622
Email: brisbane@rwcorkery.com

This message is intended for the addressee named and may contain confidential/privileged information. If you are not the intended recipient, please delete it and notify the sender. Any confidentiality or privilege between R. W. Corkery & Co. Pty Limited and Client is not waived or lost because this email has been sent to you by mistake. You should scan any included files for viruses.

From: Alex Irwin
Sent: Friday, 10 November, 2017 12:23 PM
To: 'melanie.klootwijk@fcns.w.com.au'
Cc: Dan Kirby
Subject: RE: 949 - Wallerawang Quarry - Requirement to Consult with FC NSW
Attachments: 94902h_Bushfire MP_November 2017.docx

Melanie,

I've attached a draft Bushfire Management Plan for Wallerawang Quarry.

You may find it easier to provide any comments / feedback once you've read through the commitments of Walker Quarries to bushfire management. Please note the green text represents modifications from the previous Bushfire MP.

Regards,

Alex Irwin
Senior Environmental Consultant
(Mobile 0429 635 975)

RW Corkery & Co Pty Limited

Geological and Environmental Consultants



Brooklyn
Level 1, 12 Dangar Road
PO Box 239
BROOKLYN NSW 2083

Orange
62 Hill Street
ORANGE NSW 2800

Brisbane
Suite 5, Building 3,
Pine Rivers Office Park
205 Leitchs Road
BRENDALDE QLD 4500

Phone: (02) 9985 8511
Fax: (02) 6361 3622
Email: brooklyn@rwcorkery.com
Website: www.rwcorkery.com

Phone: (02) 6362 5411
Fax: (02) 6361 3622
Email: orange@rwcorkery.com

Phone: (07) 3205 5400
Fax: (02) 6361 3622
Email: brisbane@rwcorkery.com

This message is intended for the addressee named and may contain confidential/privileged information. If you are not the intended recipient, please delete it and notify the sender. Any confidentiality or privilege between R. W. Corkery & Co. Pty Limited and Client is not waived or lost because this email has been sent to you by mistake. You should scan any included files for viruses.

From: Dan Kirby [mailto:Dan.Kirby@fcns.w.com.au]
Sent: 3 November 2017 2:51 PM
To: Alex Irwin <alex@rwcorkery.com>
Subject: RE: 949 - Wallerawang Quarry - Requirement to Consult with FC NSW

Hi Alex,

Thanks for this. I will pass it on to Mel Klootwijk for her comment. If I recall correctly we may have been asked for this information directly from Dept of Planning, and Mel was handling that, so I'd like to check with her. If we have already done so I'll get her to supply you a copy. If we have not already done so I'll ask her to prepare a comment for you.

Regards,

From: Melanie Klootwijk <Melanie.Klootwijk@fcnsw.com.au>
Sent: Wednesday, 15 November, 2017 11:44 AM
To: Alex Irwin
Subject: RE: 949 - Wallerawang Quarry - Requirement to Consult with FC NSW
Attachments: 94902h_Bushfire MP_November 2017.docx

Hi Alex,

Attached are some initial comments on the plan. Please let me know if you want to discuss any of the comments. What is your process? Will you note the comments in the appendix or will you address them and incorporate them into the Plan as appropriate?

Regards,
Melanie

From: Alex Irwin [mailto:alex@rwcorkery.com]
Sent: Friday, 10 November 2017 12:23 PM
To: Melanie Klootwijk <Melanie.Klootwijk@fcnsw.com.au>
Cc: Dan Kirby <Dan.Kirby@fcnsw.com.au>
Subject: RE: 949 - Wallerawang Quarry - Requirement to Consult with FC NSW

Melanie,

I've attached a draft Bushfire Management Plan for Wallerawang Quarry.

You may find it easier to provide any comments / feedback once you've read through the commitments of Walker Quarries to bushfire management. Please note the green text represents modifications from the previous Bushfire MP.

Regards,

Alex Irwin

Senior Environmental Consultant
(Mobile 0429 635 975)

RW Corkery & Co Pty Limited

Geological and Environmental Consultants



Brooklyn
Level 1, 12 Dangar Road
PO Box 239
BROOKLYN NSW 2083

Orange
62 Hill Street
ORANGE NSW 2800

Brisbane
Suite 5, Building 3,
Pine Rivers Office Park
205 Leitchs Road
BRENDAL QLD 4500

Phone: (02) 9985 8511
Fax: (02) 6361 3622
Email: brooklyn@rwcorkery.com
Website: www.rwcorkery.com

Phone: (02) 6362 5411
Fax: (02) 6361 3622
Email: orange@rwcorkery.com

Phone: (07) 3205 5400
Fax: (02) 6361 3622
Email: brisbane@rwcorkery.com

This message is intended for the addressee named and may contain confidential/privileged information. If you are not the intended recipient, please delete it and notify the sender. Any confidentiality or privilege between R. W. Corkery & Co. Pty Limited and Client is not waived or lost because this email has been sent to you by mistake. You should scan any included files for viruses.

From: Dan Kirby [mailto:Dan.Kirby@fcnsw.com.au]
Sent: 3 November 2017 2:51 PM

To: Alex Irwin <alex@rwcorkery.com>

Subject: RE: 949 - Wallerawang Quarry - Requirement to Consult with FC NSW

Hi Alex,

Thanks for this. I will pass it on to Mel Klootwijk for her comment. If I recall correctly we may have been asked for this information directly from Dept of Planning, and Mel was handling that, so I'd like to check with her. If we have already done so I'll get her to supply you a copy. If we have not already done so I'll ask her to prepare a comment for you.

Regards,

Dan Kirby | Fire & Stewardship Manager
Forestry Corporation of NSW | Northern Softwoods

Cnr Browning St & Panorama Ave | Bathurst NSW 2795
PO Box 143 | Bathurst NSW 2795
M: 0448 033 325 | E: dan.kirby@fcnsw.com.au | W: www.forestrycorporation.com.au

From: Alex Irwin [<mailto:alex@rwcorkery.com>]

Sent: Friday, 3 November 2017 11:54 AM

To: Dan Kirby <Dan.Kirby@fcnsw.com.au>

Subject: 949 - Wallerawang Quarry - Requirement to Consult with FC NSW

Good afternoon Dan,

Walker Quarries Pty Ltd received approval for a modification to the project approval for the Wallerawang Quarry (DA 344-11-2001) on 25 August 2017 (attached).

Previously I noted Condition 3(31) of DA 344-11-2001 requires Walker Quarries to consult with FC NSW in the preparation of a Rehabilitation Management Plan. I have also identified that Condition 3(40) requires Walker Quarries to consult with FC NSW in the preparation of a Bushfire Management Plan.

With respect to the nominated condition, can you provide any specific requirements of FC NSW for the preparation and/or update of this plan.

I note DA 344-11-2001 requires these plans to be submitted to the Secretary for approval by 25 November 2017 and so we would appreciate any advice as soon as possible.

Regards,

Alex Irwin
Senior Environmental Consultant
(Mobile 0429 635 975)

RW Corkery & Co Pty Limited

Geological and Environmental Consultants

Brooklyn
Level 1, 12 Dangar Road
PO Box 239
BROOKLYN NSW 2083

Phone: (02) 9985 8511
Fax: (02) 6361 3622

Orange
62 Hill Street
ORANGE NSW 2800

Phone: (02) 6362 5411



Brisbane
Suite 5, Building 3,
Pine Rivers Office Park
205 Leitchs Road
BRENDAL QLD 4500

Phone: (07) 3205 5400
Fax: (02) 6361 3622

From: Melanie Klootwijk <Melanie.Klootwijk@fcnsw.com.au>
Sent: Thursday, 23 November, 2017 2:16 PM
To: Alex Irwin
Subject: RE: 949 - Wallerawang Quarry - Requirement to Consult with FC NSW
Attachments: 94902h_Bushfire MP_November 2017_v2_MK edits.docx

Hi Alex,

Thanks for including those suggestions, I've added a few more comments after reviewing the doc with Dan.

The main one is in relation to clearing and other high risk activities. You included your requirements in relation to the RFS information, which I wanted to read before making the following comments. The below information is required for anyone and everyone working within a State forest, I send out this information every year as a reminder to all organisations/contractors etc before the fire season starts. Ray Sharwood (the quarry manager) is aware of the colour code system, and receives the daily SMS with that info.

I suggest you insert the below information in an appendix and just refer to it under the relevant sections.

We usually require the below for **all** activities, however as the quarry site has a relatively low fire risk due to the work not being close to vegetation or other flammable material, we would require the below for clearing operations and any other activities close to high risk vegetation, eg welding.

I am not back in the office until next Tuesday. If you require further discussion or clarification, please contact Dan.

FCNSW refers to the Bushfire Danger Period, generally Oct-March, depending on conditions. During this time FCNSW calculates the FDI for specific forest areas and each day is categorised into a colour code: yellow, orange or red. Depending on the colour code there are requirements to carry certain types of equipment/water as classified as category 1, 2 or 3 fire preparedness (as a minimum). During the Bushfire Danger Period everyone working within a State forest is required to always follow category 1 requirements and when the colour code is Orange or Red, carry the additional equipment.

Yellow (category 1)	a knapsack (or fire extinguisher) minimum capacity of 15L water a dry chemical fire extinguisher a rakehoe chainsaws can only be used after 1pm on approved cleared areas provided Category 2 requirements are met
Orange (category 2)	all category 1 requirements, plus 400L of water with a pump unit of 2.2kw minimum capacity 60m of hose Nozzle capable of delivering a fog spray and jet stream Fully fuelled pump motor Trenching/ripping or other earthworks in rock to cease at 1pm Vegetation clearing/mulching with exposed rock to cease at 1pm
Red (category 3)	all category 2 requirements, plus operations are located in low fire-risk areas operations are prohibited where significant amounts of slash have been cured for more than one week No grinding, welding or other activities involving a naked flame, sparks or with the potential to cause ignition (including dozer work) all work must cease by 1pm

The colour codes are calculated each afternoon for the following day. To find out the colour code for each day you are working in the forest please call the Fire Duty officer on 6332 4812 that morning, or if you will be working on State Forest for a prolonged period of time you can receive an automated SMS advising the colour code.

Regards,

Melanie Klootwijk | Stewardship Supervisor (NOTE: I work Tues - Thurs)
Forestry Corporation of NSW | Northern Softwoods Region

Cnr Panorama Ave and Browning Street | Bathurst NSW 2795
PO Box 143 | Bathurst NSW 2795
T: 06 6330 1002 | M: 0427 259 503 | F: 02 6331 5528
E: melanie.klootwijk@fcnsw.com.au | W: www.forestrycorporation.com.au

From: Alex Irwin [mailto:alex@rwcorkery.com]
Sent: Friday, 17 November 2017 4:06 PM
To: Melanie Klootwijk <Melanie.Klootwijk@fcnsw.com.au>
Subject: RE: 949 - Wallerawang Quarry - Requirement to Consult with FC NSW

Melanie,

An updated Bushfire MP is attached.

Further detail on the review of FDI is included.

Also, on reflection specific firebreaks are unlikely to be implemented on the Mine Site. However, the Company will ensure that once clearing has been completed equipment does not operate within 6m of the surrounding vegetation.

Regards,

Alex Irwin
Senior Environmental Consultant
(Mobile 0429 635 975)

RW Corkery & Co Pty Limited

Geological and Environmental Consultants



Brooklyn
Level 1, 12 Dangar Road
PO Box 239
BROOKLYN NSW 2083

Orange
62 Hill Street
ORANGE NSW 2800

Brisbane
Suite 5, Building 3,
Pine Rivers Office Park
205 Leitchs Road
BRENDALDE QLD 4500

Phone: (02) 9985 8511
Fax: (02) 6361 3622
Email: brooklyn@rwcorkery.com
Website: www.rwcorkery.com

Phone: (02) 6362 5411
Fax: (02) 6361 3622
Email: orange@rwcorkery.com

Phone: (07) 3205 5400
Fax: (02) 6361 3622
Email: brisbane@rwcorkery.com

This message is intended for the addressee named and may contain confidential/privileged information. If you are not the intended recipient, please delete it and notify the sender. Any confidentiality or privilege between R. W. Corkery & Co. Pty Limited and Client is not waived or lost because this email has been sent to you by mistake. You should scan any included files for viruses.

From: Melanie Klootwijk [mailto:Melanie.Klootwijk@fcnsw.com.au]
Sent: 15 November 2017 11:44 AM
To: Alex Irwin <alex@rwcorkery.com>
Subject: RE: 949 - Wallerawang Quarry - Requirement to Consult with FC NSW

4433_Wallerawang Quarry_Review of Management Plans_Request for Forestry Corporation NSW Require...

Alex Irwin

To: Melanie Klootwijk



Reply

Reply All

Forward



Wed 18/03/2020 11:55 AM



Final Consolidated Consent Mod 3_.pdf .pdf File

Good morning Melanie,

As you may be aware, Walker Quarries received approval for a proposed modification to operations at the Wallerawang Quarry which is operated under State Significant Development 344-11-2001 and EPL 13172.

Wallerawang Quarry currently operates in accordance with a number of environmental management plans required by DA 344-11-2001. Condition 5(40) of DA 344-11-2001 requires that these management plans are reviewed and updated as necessary within 3 months of receiving approval for a modification.

Several of the management plans are prepared in accordance with conditions of DA 344-11-2001 which require consultation with the Forestry Corporation NSW, namely:

- Condition 31(b) of Schedule 3 requires the Rehabilitation Management plan to be prepared in consultation with Forestry Corporation NSW.
- Condition 40 of Schedule 3 requires the Bush Fire Management plan to be prepared in consultation with Forestry Corporation NSW.

I have attached DA 344-11-2001 for the EPA's benefit. The current version of the Bushfire Management Plan can be viewed and downloaded from Walker Quarries website here:

<https://walkerquarries.com.au/statutory-information/#section3>

It is noted that the Rehabilitation Management Plan has been incorporated into the Mining Operations Plan of the Quarry. This can be viewed and downloaded from Walker Quarries website here:

<http://walkerquarries.com.au/statutory-information/#section2>

It is requested that Forestry Corporation NSW provide any requirements for the update of the nominated management plans. It is noted that Umwelt is currently updating these management plans to reflect the modified operations and conditions relating to water. This includes updating the Erosion and Sediment Control Plan for the Quarry.

Alternatively, should the Forestry Corporation NSW decline the invitation to provide requirements or recommendations for the management plans, a response from Forestry Corporation NSW to confirm this is requested.

As Walker Quarries has until the 26 May 2020 to resubmit the management plans, a response from Forestry Corporation NSW by 17 April is requested. Should Forestry Corporation NSW's preference be to review updated versions of the management plans and comment on these, an earlier response would be appreciated.

Should you require any further information, please do not hesitate to contact me.

Regards,

Alex Irwin
Principal Environmental Consultant

Umwelt (Australia) Pty Limited
Office 1, 3 Hampden Avenue
Orange, NSW 2800

Phone: (02) 4950 5322
Mobile: 0436 606 529

www.umwelt.com.au



Forestry Corporation of NSW ABN 43 141 857 613

Northern Softwood Region

Cnr Browning St & Panorama Ave Bathurst NSW 2795
(PO Box 143 Bathurst NSW 2795)

T 02 6331 2044

F 02 6331 5528

www.forestrycorporation.com.au

8/04/2020

Ref No.: F2010/01613

Alex Irwin
Umwelt Australia
Office 1, 3 Hampden Avenue
Orange NSW 2800

Sent via email: airwin@umwelt.com.au

Dear Alex,

Wallerawang Quarry Review of Management plans – FCNSW response

Thank you for the opportunity to comment on the review of the following management plans for Wallerawang Quarry:

- Bush Fire Management Plan
- Rehabilitation Management Plan (incorporated into the MOP)

Bushfire Management Plan

FCNSW is satisfied with the current contents of the plan and has no further recommendations for incorporation.

Rehabilitation Management Plan

FCNSW and Walker Quarries have had several discussions and correspondence in relation to the Rehabilitation Management Plan since the current one was written. FCNSW requests updated information in relation to rehabilitation is incorporated into the plan, as outlined in the recent MOD3 documentation.

FCNSW requests to review final drafts of both management plans prior to submission to ensure our interests are covered.

Kind Regards,

A handwritten signature in black ink, appearing to read "Melanie Klotwijk".

Melanie Klotwijk
Stewardship Coordinator
Northern Softwood Region

NSW Rural Fire Service

From: Jason Maslen <Jason.Maslen@rfs.nsw.gov.au>
Sent: Wednesday, 29 November, 2017 2:24 PM
To: Alex Irwin
Subject: FW: 949 - Wallerawang Quarry - Bushfire Management Plan
Attachments: 94902h_Bushfire MP_November 2017.pdf

Afternoon Alex,

Thanks for your email.

A review of NSW RFS files and Department of Planning and Environment Major Projects website indicates that the development application was not referred to the NSW RFS and did it not impose the condition requiring the plan to be to its satisfaction. In addition, the NSW RFS does not endorse bushfire management plans and therefore does have any comments to make.

Instead, I recommend that you contact the local NSW RFS District Office to seek advice of any particular operational requirements to be considered. The District office can be contacted on 1300 258 737.

Regards,

Jason Maslen



Jason Maslen | Team Leader, Development Assessment and Planning | Planning and Environment Services
NSW RURAL FIRE SERVICE
42 Lamb Street, Glendenning 2761 | Locked Bag 17 Granville NSW 2142
P 1300 NSW RFS E jason.maslen@rfs.nsw.gov.au
www.rfs.nsw.gov.au | www.facebook.com/nswrfs | www.twitter.com/nswrfs
PREPARE. ACT. SURVIVE.

From: Planning & Environment Services
Sent: Wednesday, 29 November 2017 9:41 AM
To: Records <Records@rfs.nsw.gov.au>
Subject: FW: 949 - Wallerawang Quarry - Bushfire Management Plan

From: Alex Irwin [<mailto:alex@rwcorkery.com>]
Sent: Tuesday, 28 November 2017 12:35 PM
To: Planning & Environment Services
Cc: 'Gen Seed' ; 'Paul Hensley (pfhensley@gmail.com)' ; 'davidm@walkerquarries.com.au'
Subject: 949 - Wallerawang Quarry - Bushfire Management Plan

Good morning,

Condition 3(40) of development consent DA 344-11-2001 for the Wallerawang Quarry requires a Bushfire Management Plan to be prepared to the satisfaction of the NSW Rural Fire Service.

BUSHFIRE

39. The Applicant must:
 - (a) ensure that the development is suitably equipped to respond to any fires on site; and
 - (b) assist the Rural Fire Service and emergency services to the extent practicable if there is a fire in the vicinity of the site.
40. The Applicant must prepare a Bushfire Management Plan for the site, in consultation with FCNSW to the satisfaction of the Rural Fire Service.

On behalf of Walker Quarries, RWC has consulted with FC NSW and updated the Bushfire Management Plan for your consideration. Changes from the previous Bushfire Management Plan which was supplied to the RFS are provided in green.

Could you please advise as to whether the attached Bushfire Management Plan is to the satisfaction of the NSW RFS.

Regards,

Alex Irwin

Senior Environmental Consultant
(Mobile 0429 635 975)

RW Corkery & Co Pty Limited

Geological and Environmental Consultants



Brooklyn
Level 1, 12 Dangar Road
PO Box 239
BROOKLYN NSW 2083

Orange
62 Hill Street
ORANGE NSW 2800

Brisbane
Suite 5, Building 3,
Pine Rivers Office Park
205 Leitchs Road
BRENDAL QLD 4500

Phone: (02) 9985 8511
Fax: (02) 6361 3622
Email: brooklyn@rwcorkery.com
Website: www.rwcorkery.com

Phone: (02) 6362 5411
Fax: (02) 6361 3622
Email: orange@rwcorkery.com

Phone: (07) 3205 5400
Fax: (02) 6361 3622
Email: brisbane@rwcorkery.com

This message is intended for the addressee named and may contain confidential/privileged information. If you are not the intended recipient, please delete it and notify the sender. Any confidentiality or privilege between R. W. Corkery & Co. Pty Limited and Client is not waived or lost because this email has been sent to you by mistake. You should scan any included files for viruses.

RFS Disclaimer:

This email message, and any files/links transmitted with it, is intended only for the addressee(s) and contains information which may be confidential. If you are not the intended recipient, please notify the sender and delete this email and any copies or links to this email completely and immediately from your system. Views expressed in this message are those of the individual sender, and are not necessarily the views of the NSW Rural Fire Service.

From: Gen Seed <genevieve.seed@planning.nsw.gov.au>
Sent: Monday, 18 December, 2017 9:20 AM
To: Alex Irwin
Cc: Georgia Dragicevic
Subject: RE: 949 - Wallerawang Quarry - Bushfire Management Plan

Good Morning Alex

Sorry for the delay on this one. The Department acknowledges that the RFS will not be commenting on the bushfire management plan.

The Department notes that the management plan has been prepared in consultation with FCNSW and although endorsement cannot be obtained from RFS, the condition has been satisfied to the best of the applicant's ability.

I will make note of this on our file for compliance purposes.

Kind regards,

Gen

From: Alex Irwin [mailto:alex@rwcorkery.com]
Sent: Wednesday, 29 November 2017 2:30 PM
To: Gen Seed <genevieve.seed@planning.nsw.gov.au>
Cc: 'davidm@walkerquarries.com.au' <davidm@walkerquarries.com.au>; 'Paul Hensley (pfhensley@gmail.com)' <pfhensley@gmail.com>; 'John McAuley' <pmcauley@ozemail.com.au>
Subject: FW: 949 - Wallerawang Quarry - Bushfire Management Plan

Gen,

Please refer to the email from NSW RFS below.

Based on the comment, it would not appear possible for the Proponent to comply with the condition. Is it possible for the DPE to provide an acknowledgement that obtaining the satisfaction of the NSW RFS is not possible, or provide an alternative approach that the DPE would consider to satisfy the condition.

Regards,

Alex Irwin
Senior Environmental Consultant
(Mobile 0429 635 975)

RW Corkery & Co Pty Limited

Geological and Environmental Consultants

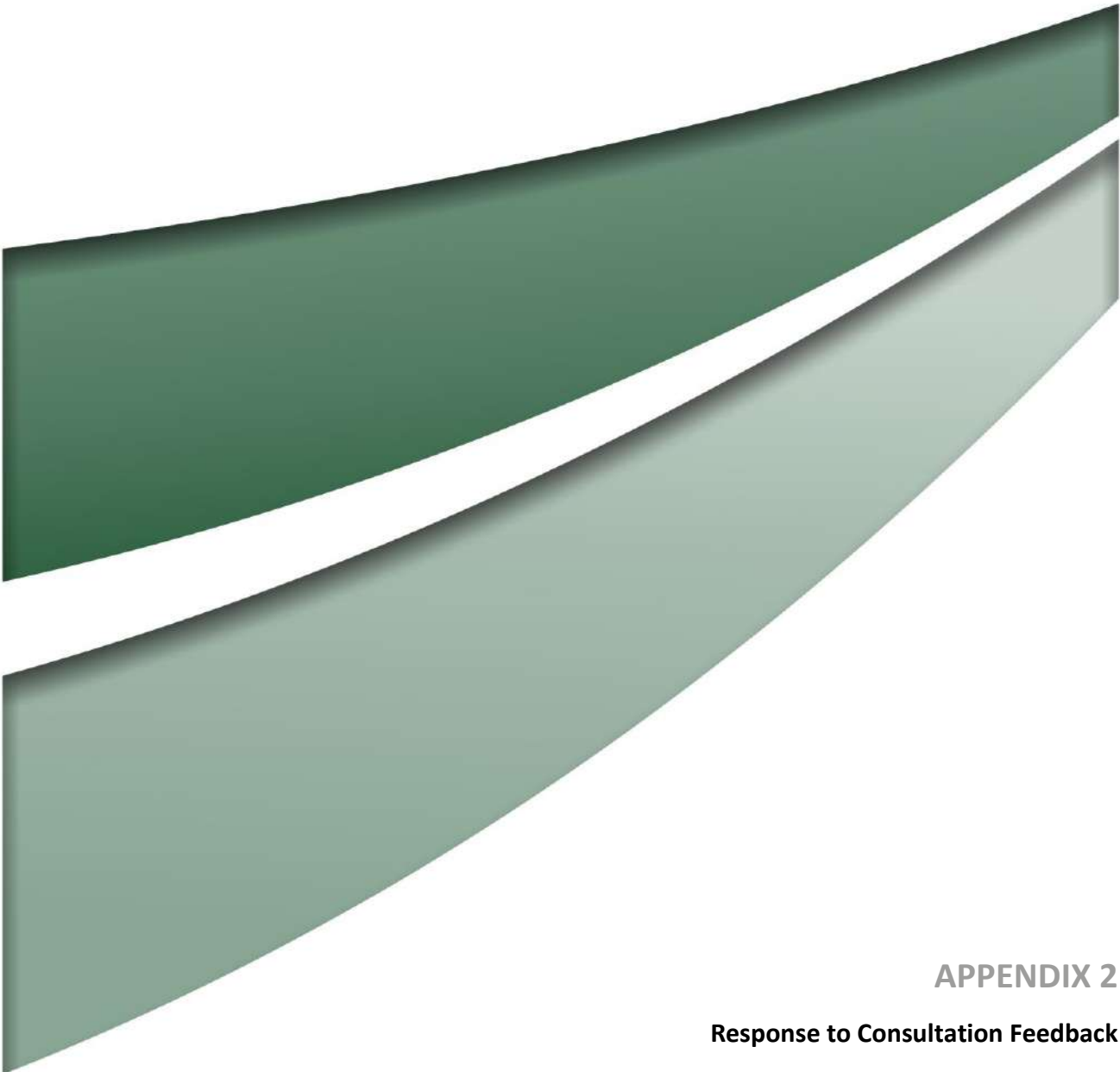
Brooklyn
Level 1, 12 Dangar Road
PO Box 239
BROOKLYN NSW 2083

Orange
62 Hill Street
ORANGE NSW 2800

Brisbane
Suite 5, Building 3,
Pine Rivers Office Park
205 Leitchs Road
BRENDALD QLD 4500

Phone: (02) 9985 8511

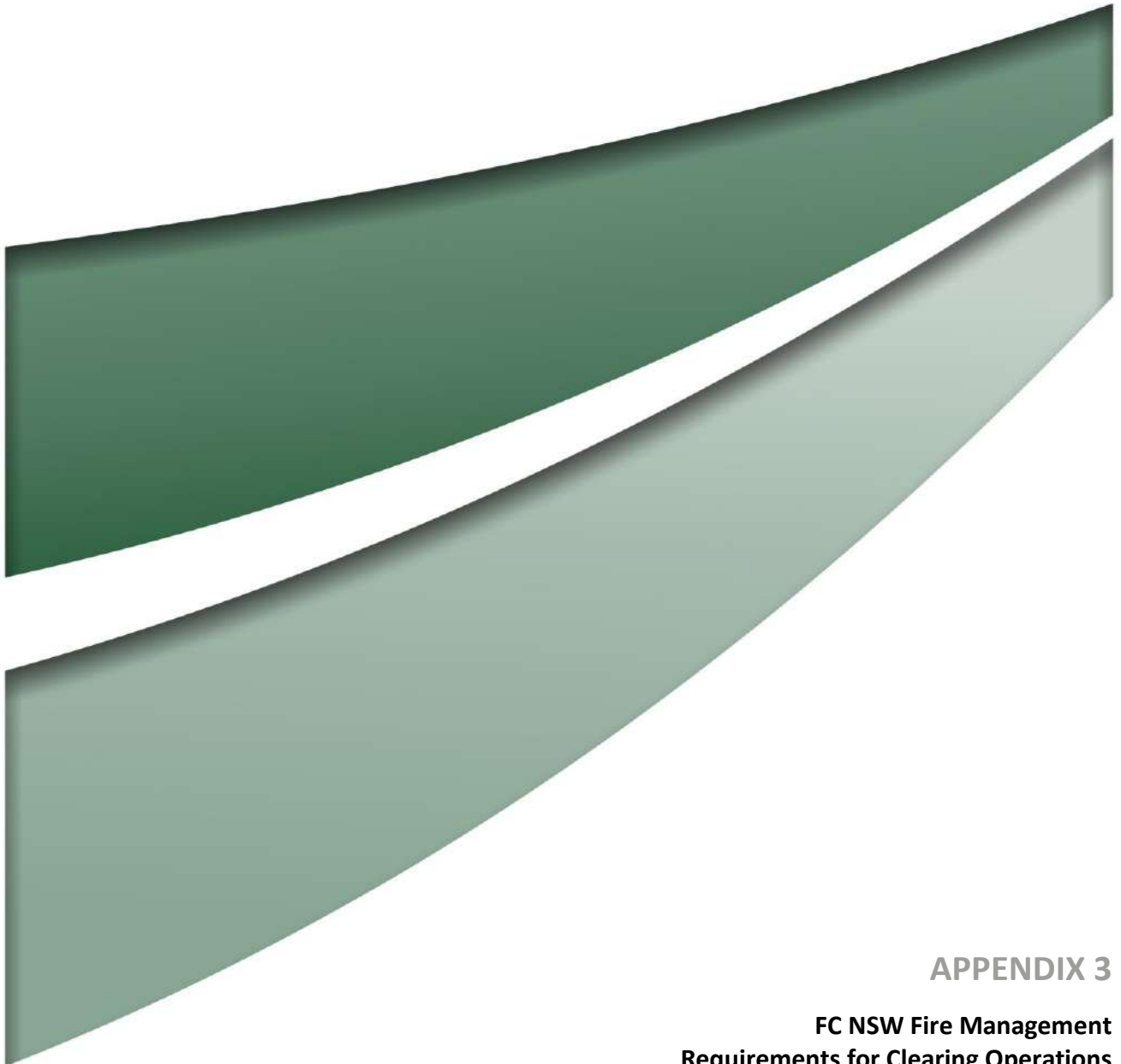




APPENDIX 2

Response to Consultation Feedback

Agency	Consulted on:	Replied on	Requests / Requirements	Addressed
FCNSW	20/10/2017	15/11/2017	Request for the plan to reference equipment requirements under the FC NSW Bushfire Danger colour coding system.	Complete (refer to Section 4.2)
RFS	28/11/2017	29/11/2017	None	
FCNSW	18/03/2020	08/04/2020	None	



APPENDIX 3

FC NSW Fire Management Requirements for Clearing Operations

Appendix 2

FC NSW Fire Management Requirements for Clearing Operations

FCNSW refers to the Bushfire Danger Period, generally Oct-March, depending on conditions. During this time FCNSW calculates the FDI for specific forest areas and each day is categorised into a colour code: yellow, orange or red. Depending on the colour code there are requirements to carry certain types of equipment/water as classified as category 1, 2 or 3 fire preparedness (as a minimum). During the Bushfire Danger Period everyone working within a State forest is required to always follow category 1 requirements and when the colour code is Orange or Red, carry the additional equipment.

Yellow (category 1)

- a knapsack (or fire extinguisher) minimum capacity of 15L water
- a dry chemical fire extinguisher
- rakehoe
- chainsaws can only be used after 1pm on approved cleared areas provided Category 2 requirements are met

Orange (category 2)

All category 1 requirements, plus

- 400L of water with a pump unit of 2.2kw minimum capacity
- 60m of hose
- Nozzle capable of delivering a fog spray and jet stream
- Fully fuelled pump motor
- Trenching/ripping or other earthworks in rock to cease at 1pm
- Vegetation clearing/mulching with exposed rock to cease at 1pm

Red (category 3)

All category 2 requirements, plus

- operations are located in low fire-risk areas
- operations are prohibited where significant amounts of slash have been cured for more than one week
- No grinding, welding or other activities involving a naked flame, sparks or with the potential to cause ignition (including dozer work)
- all work must cease by 1pm

The colour codes are calculated each afternoon for the following day. To find out the colour code for each day you are working in the forest please call the Fire Duty

officer on 6332 4812 that morning, or if you will be working on State Forest for a prolonged period of time you can receive an automated SMS advising the colour code.

